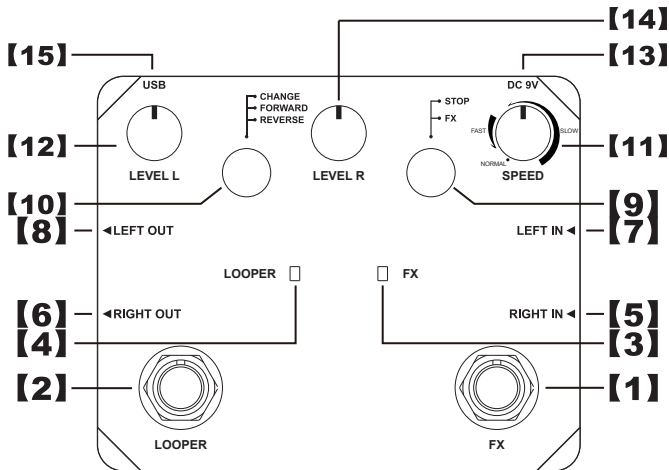


# 双踏looper效果器说明书

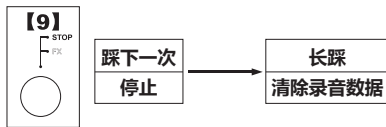
感谢您使用本公司的产品，在使用本产品之前请仔细阅读本说明书。



## 1. 右脚脚踏开关

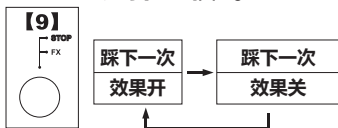
- (1). 右脚脚踏开关的功能需要配合【9】模式选择开关：FX/STOP使用。
- (2). 当模式选择开关选择STOP模式时，右脚脚踏开关用于停止录音或者播放和清除录音数据，配合【4】LOOPER指示灯使用，这个清除录音数据操作不可以恢复。
- (3). 如果当前为录音(LOOPER指示灯为红色)或者播放(LOOPER指示灯绿色)时，踩下一次右脚脚踏开关，将立刻停止录音或者播放，这时LOOPER指示灯为绿色并且闪烁。
- (4). 如果当前为停止状态(LOOPER指示灯为绿色并且闪烁)，长踩(大概2秒)右脚脚踏开关，LOOPER指示灯闪烁两下，这时所有的录音数据被清除。请看下图：

### 选择STOP模式



- (5). 当模式选择开关选择FX模式时，右脚脚踏开关用于开关效果，配合【3】FX效果状态指示灯使用。
- (6). 如果FX指示灯亮起，说明当前为效果开启状态，踩下一次，效果进入关闭状态，再踩一下，效果进入开启状态。依此循环，请看下图。

## 选择FX模式



## 2. 左脚脚踏开关

左脚脚踏开关用于looper的录音、播放、叠加、撤销、重做、停止、清除等操作。配合【4】LOOPER指示灯使用

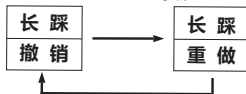
(1). 插上电源时，如果【4】LOOPER指示灯熄灭，表示目前没有录音数据，踩下一次左脚脚踏开关，这时【4】LOOPER指示灯的红灯亮起，表示进入录音状态。录音完成后，再踩下一次左脚脚踏开关，这时【4】LOOPER指示灯的绿灯亮起，表示进入播放状态，系统会循环播放前面的录音数据，在播放到录音的结尾时绿灯闪烁一下，表示已经到了结尾，重新开始下一次播放。在播放的任意时间点踩下左脚脚踏开关，这时【4】LOOPER指示灯的红灯亮起，表示进入叠加状态。叠加就是把你现在弹奏输入的声音和前面的录音数据叠加在一起。叠加状态下会循环播放前面的录音数据，本产品的叠加是没次数限制的。在叠加状态下，踩下左脚脚踏开关，这时【4】LOOPER指示灯的绿灯亮起，表示进入播放状态，依此循环。请看下图：

### 录音/播放/叠加



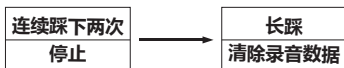
(2). 在录音状态下，长踩(大概2秒)左脚脚踏开关，当前的录音数据会被清除，【4】LOOPER指示灯闪烁两下然后熄灭。在播放或者叠加状态下长踩(大概2秒)左脚脚踏开关【4】LOOPER指示灯闪烁两下然后撤销(或者重做)上一次被叠加(或者撤销)的录音数据。例如，刚叠加了一段录音数据，但是觉得不好，不想要这段叠加的录音数据，长踩(大概2秒)左脚脚踏开关【4】LOOPER指示灯闪烁两下，然后删除(即撤销刚才的叠加操作)这段叠加的录音数据，然而，现在又想恢复这段刚被删除的录音数据，长踩(大概2秒)左脚脚踏开关LOOPER指示灯闪烁两下，然后恢复(即重做刚才叠加操作)这段叠加的录音数据，依此循环，请看下图：

### 撤销/重做



(3). 在任何状态下连续踩下两次左脚脚踏开关，【4】LOOPER指示灯的绿灯亮起并且闪烁，表示系统进入停止状态，在停止状态下，长踩(大概2秒)左脚脚踏开关会清除录音数据，【4】LOOPER指示灯熄灭，这个操作数据不可以恢复。请看下图：

## 停止/清除



### 3. 效果状态指示灯

- (1). FX效果状态指示灯需要配合【1】右脚脚踏开关一起使用。
- (2). 如果当前为正向播放并且效果打开，FX的红色灯亮起；
- (3). 如果当前为反向播放并且效果打开，FX的绿色灯亮起；
- (4). 如果当前效果关闭，FX灯熄灭。

### 4. LOOPER状态指示灯

- (1). LOOPER状态指示灯需要配合【2】左脚脚踏开关一起使用。
- (2). 录音状态下LOOPER状态指示为红色。
- (3). 播放状态下LOOPER状态指示为绿色。
- (4). 叠加状态下LOOPER状态指示为红色。
- (5). 停止状态下，如果有录音数据，LOOPER状态指示为绿色并且闪烁，如果没有录音数据，LOOPER状态指示熄灭。
- (6). 在撤销、重做操作时，LOOPER状态指示为绿色并且闪烁两下，表示操作完成。
- (7). 在播放结尾时，LOOPER状态指示为绿色并且闪烁一下，表示播放结束，重新开始下一次播放。

### 5. 右声道输入

右声道6.35输入插座，接吉它

### 6. 右声道输出

右声道6.35输出插座，接音箱

### 7. 左声道输入

左声道6.35输入插座，接吉它

### 8. 左声道输出

左声道6.35输出插座，接音箱

### 9. 模式选择开关：FX/STOP

- (1). 模式选择开关（FX/STOP）需要与【1】右脚脚踏开关配合一起使用。
- (2). 当模式选择开关拨到上面选择STOP模式，表示右脚脚踏开关用于停止录音、播放或者清除录音数据；当模式选择开关拨到下面选择FX模式，表示右脚脚踏开关用于开关效果。详情请看第(1)点。

### 10. 模式选择开关

- (1). 当模式选择开关拨到上面选择CHANGE档时，如果效果打开，【3】FX效果状态指示灯为红色，左右声道的播放会交换过来，意思就是，左声道的声音会从右声道播放出来，同时右声道的声音会从左声道播放出来，但是原声还是直通，意思是左声道弹奏的声音还是会从左声道输出，右声道弹奏的声音还是会从右声道输出，改变的是播放的声音。模式选择开关没拨到上面选择CHANGE档时，声音是左边对应左边输出，右边对应右边输出请看图1，当模式选择开关拨到上面选择CHANGE档时，声音是左边对应右边输出，右边对应左边输出请看图2

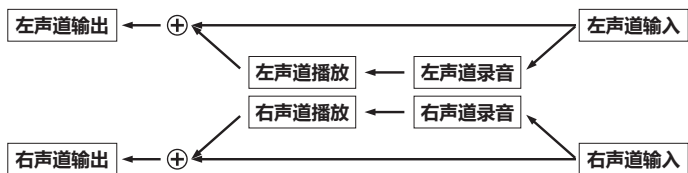


图 1

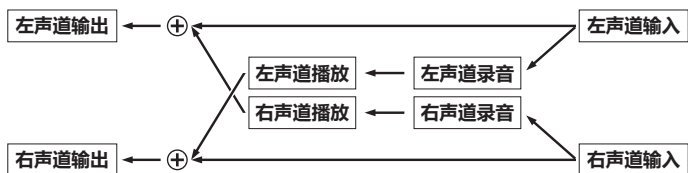


图 2

(2). 当模式选择开关拨到中间选择FORWARD档时，如果效果打开，【3】FX效果状态指示灯为红色，意思是播放时，按正常的方式播放，例如录音时的声音是：123，播放也是：123。

(3). 当模式选择开关拨到下面选择REVERSE档时，如果效果打开，【3】FX效果状态指示灯为绿色，意思是播放时，反方向播放，例如录音时的声音是：123，播放是：321。

## 11. 模式选择开关

录音、播放速度一共有11种，当旋钮打到最左边是NORMAL档，接着往右是FAST档一共有3种速度，速度是越来越快，最快的速度是NORMAL的1.5倍，再往右是SLOW档一共有7种速度，速度是越来越慢，最慢的速度是NORMAL档的2倍。

注意：由于11档旋钮在使用时会出现偏差，可能会在选择速度时没选择上，或者出现断断续续的声音，这时你需要重新校正11档旋钮。请按以下步骤操作：

(1). 用手同时按下左右脚踏开关，然后插上9V电源，这时黄色灯会亮起表示已经进入校正状态。

(2). 把11档旋钮调到最左边(最小)，按一下右边的脚踏开关，这时绿灯亮一下又变成黄灯表示第1档已经校正完成。

(3). 把11档旋钮往右边打一下(调到第2档)，按一下右边的脚踏开关，这时绿灯亮一下又变成黄灯表示第2档已经校正完成。

(4). 依此类推，把11档全部校正完成后，系统会自动重启，进入正常的工作模式

## 12. 左声道输出音量控制旋钮

旋到最左边输出声音最小，旋到最右边输出声音最大

## 13. 9V直流电源输入

本产品使用电压为9V(内负外正(⊖ ⊕))，电流为500mA以上的直流电源供电

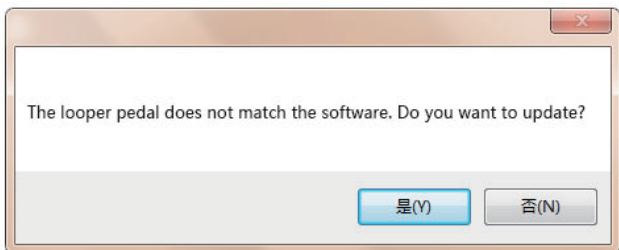
## 14. 右声道输出音量控制旋钮

旋到最左边输出声音最小，旋到最右边输出声音最大

## 15. USB接口

当用USB线与电脑连接上时，产品上的左右两个黄色LED灯会同时亮起，这时我们可以打开用户软件进行操作

由于我们的用户软件会不断的升级，所以如果产品的软件不是最新的，连接上USB线，打开用户软件时会弹出更新的对话框，这时只要点“是”即可以更新完成，请看下图：



更新完成后进入正常的用户界面。其中IMPORT按钮就是把电脑上的文件下载到产品中，EXPORT按钮就是把产品中的录音数据上传到电脑上，目前只支持\*.WAV格式的文件。请看下图：



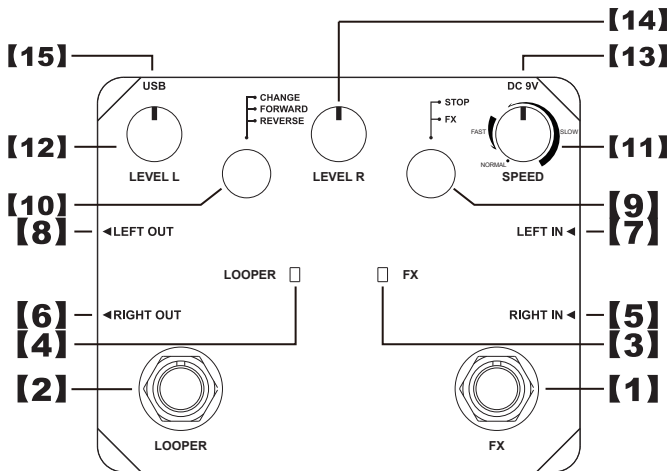
在家里练习时，可以下载各种你喜欢的声音做背景音，方便实用。也可以把自己录制的声音保存到电脑上做创作素材。

### 产品参数：

- ◆ 工作电流：165mA
- ◆ 输入电阻：470K  $\Omega$
- ◆ 输出电阻：100 $\Omega$
- ◆ 尺寸：116(L)\*90(W)\*35(H)mm
- ◆ 重量：522克(带包装)
- ◆ 附件：1.使用说明手册,2.USB数据线(与电脑连接上传/下载音频文件，配套上传/下载软件请到<http://www.rowinmusic.com/support.php>下载页面下载)
- ◆ 注：只支持WAV格式的音频文件上传到该效果器

# TWIN LOOPER Manual

Thanks for purchasing our product, please read the operating instructions below carefully before operate.

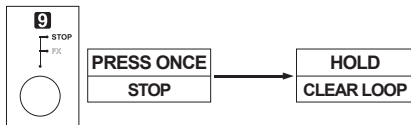


## 1. Right footswitch

- (1). Right foot switch functions need to use with **[9]** mode selection switch: FX / STOP
- (2). When the mode selection switch select STOP mode, right footswitch is used to stop recording and playback, or clear recording data, Using with **[4]** LOOPER indicator LED, this operation can not be restored.
- (3). When recording (LOOPER indicator LED is red) or playing (LOOPER indicator LED is green), press right footswitch once, recording or playing will immediately stop, LOOPER indicator LED is green and flashing.
- (4). If stopped (LOOPER indicator LED is green and flashing), press right footswitch about 2 seconds, LOOPER indicator LED flashes twice, then all of the recorded data is cleared.

See below diagram:

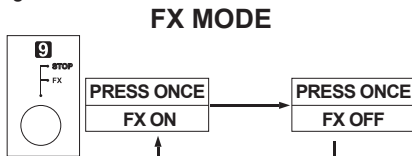
### STOP MODE



- (5). When the mode selection switch selects the FX mode, the right footswitch control effect on and off, using with the FX status indicator LED.

- (6). If the FX LED lights up, indicate effect on, press once, effect turned off, presses again, effect turned on. Follow this cycle.

See below diagram:

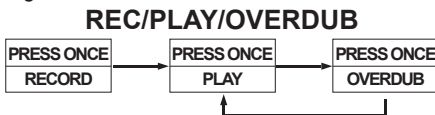


## 2. Left footswitch

The left footswitch is used for recording, playback, overdub, Undo, Redo, stop, clearing and other operations, using with LOOPER indicator LED.

- (1). When power on, **【4】** LOOPER indicator LED off, indicate the pedal no recorded data, press left footswitch once, then red LED of **【4】** LOOPER indicator LED lights up, entering into recording state. After the recording is finished, press left footswitch again, then green LED of **【4】** LOOPER indicator LED lights up, entering playing state. The system will loop the recorded data. While it play to end of the recording, green light flashes, showing it has play to the end and restart the next playing. Press left footswitch at any time, red LED of **【4】** LOOPER indicator LED lights up enters into overdub state. That is overdub the input sound to the recordings. Under overdub state the recording data will be looped. Overdub operation unrestricted on this pedal, Under overdub state, press left footswitch, then green LED of **【4】** LOOPER indicator LED lights up, entering playback mode, follow this cycle.

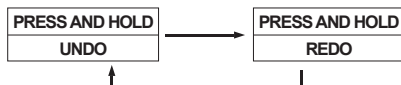
See below diagram:



- (2). In recording mode, press left footswitch about 2 seconds, the current recorded data will be cleared, **【4】** LOOPER indicator LED flashes twice and then go out. In playing or overdub state, press left footswitch about 2 seconds **【4】** LOOPER indicator LED flashes twice and then undo (or redo) the recorded data last time. For example, you just overdub a recording data, but it'd not good. You do not want this. Then press left footswitch about 2 seconds **【4】** LOOPER indicator LED flashes twice, and then delete. (undo overdub operation latest) the overdub data, however, now you want to recover the data, so press left footswitch about 2 seconds **【4】** LOOPER indicator LED flashes twice, then recover (just redo overdub operation latest) the overdub data, follow this cycle.

see below diagram:

## UNDO/REDO



- (3). Press the left footswitch twice in any state, green LED of **【4】** LOOPER indicator LED lights up and system enters the stop mode. while stopped, press left footswitch about 2 seconds, recording data will be cleared. **【4】** LOOPER indicator LED lights off, the operating data can not be recovered. See below diagram:

## STOP/CLEAR



### 3. FX LED

- (1). FX effect status indicators LED need to work with **【1】** right footswitc.
- (2). If it is forward playing and the effect is on, red FX LED lights up.
- (3). If it is reverse playing and the effect is on, green FX LED lights up.
- (4). If effect is off, FX LED goes off.

### 4. LOOPER status indicators LED

- (1). LOOPER status indicators LED need to work with **【2】** left footswitch.
- (2). In recording state: LOOPER indicator LED is red.
- (3). In playing state: LOOPER indicator LED is green.
- (4). In overdub state: LOOPER indicator LED is red.
- (5). In stop state: if there is recorded data, LOOPER status indicator LED is flashing green, if no recorded data, LOOPER status indicator LED goes off.
- (6). While Undo, Redo operation, LOOPER status indicator LED will be green and flashing twice indicate operation completed.
- (7). In the end of the playing, LOOPER status indicator LED will be green and flashing once indicate play to the end and restart the next play.

### 5. Right input jack

1/4" Right input jack, connect guitar.

### 6. Right output jack

1/4" Right output jack, connect amplifier.

### 7. Left input jack

1/4" Left input jack, connect guitar.

### 8. Left output jack

1/4" Left output jack, connect amplifier.

### 9. Mode selection switch: FX/STOP

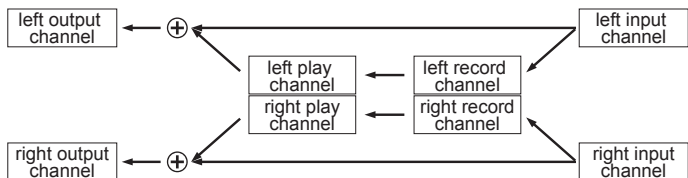
- (1). Mode selection switch need to work with **【1】** right footswitch.
- (2). When the mode selection switch select STOP mode, the right footswitch is used to stop recording and playing ,or clear recording data; when the mode selection switch select FX mode, right footswitch is used to turn on or off effect. More details please refer to part (1).



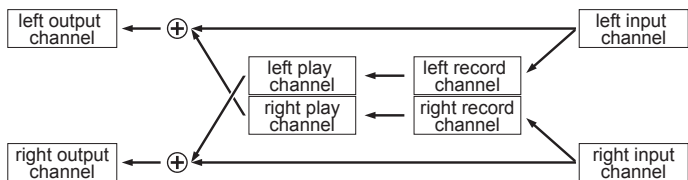
## 10. Mode selection switch

(1). When the mode selection switch did not select CHANGE mode, the left output channel sound com from the left play channel, the right output channel sound com from the right play channel. See picture 1:

When the mode selection switch select CHANGE mode, the left output channel sound com from the right play channel, the right output channel sound com form the left play channel. See picture 2:



Picture 1



Picture 2

(2). When the mode selection switch select FORWARD mode, if the effect is on,

**[3]** FX effect indicator LED is red, meaning that it is playing in the normal mode, such as when the sound recording is: 123, then 123 will be played.

(3). When the mode selection switch select REVERSE mode , if the effect is on,

**[3]** FX effect indicator LED is green, meaning that it is playing in the opposite direction, such as when the sound recording is: 123, then 321 will be played.

## 11. Recording, Playing speed knob

11 gears of recording and playing speed, turn knob to leftmost means NORMAL, then to the right means FAST. Three kinds of FAST speed, faster and faster. The fastest speed is 1.5 times than NORMAL. Then further right, means SLOW. Seven gears of SLOW speed. Slower and slower. The slowest speed is 2 times than NORAMAL.

**Note:** Since the 11 gears knob may go awry when using, it might fail to select the type of effect, or there is intermittent sound. Then you need to re-calibrate the 11 gears knob. Follow these steps:

(1). Pressing the left and right footswitches, and plug in the 9V power supply, then yellow LED lights up shows the state of correction.

(2). turn The 11 gears knob to the leftmost (minimum), press the right footswitch once, the green light turned into yellow light. Then the 1st gear has been corrected.

- (3). Turn the 11 gears knob to the right (turn to the second gear), press the right footswitch once, the green LED turned into yellow. Then the second gear has been corrected.
- (4). follow above, After the all 11 gears corrected, the system will automatically restart and enter into normal operating mode

#### **12. Left channel output volume control knob**

The left play channel sound will turn off when turn the knob to leftmost, The left play channel sound will maximum when turn the knob to rightmost.

#### **13. 9V DC Power**

This pedal uses 9 voltage and over 500mA DC power supply.

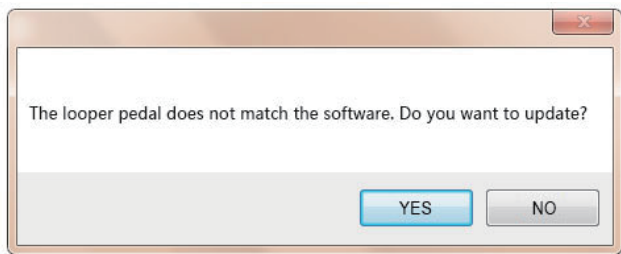
#### **14. Right channel output volume control knob**

The right play channel sound will turn off when turn the knob to leftmost, The right play channel sound will maximum when turn the knob to rightmost.

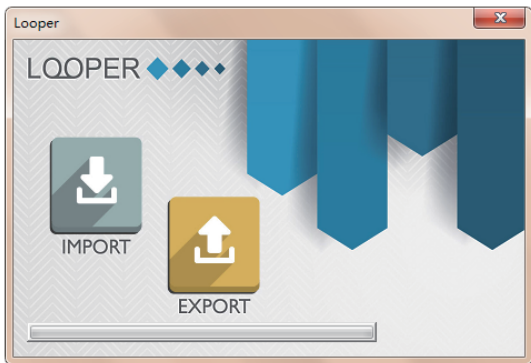
#### **15. USB interface**

When connect to computer with USB cable, two yellow LED will light up and at the same time, you can operate the user software.

Because our software will continue to upgrade, so if the firmware on the pedal is not latest, when the pedal connect to computer with USB cable then a dialog box appears to confirm upgrade and just click "YES" to complete the upgrade. See below diagram.



After the upgrade completed, it'll enter into the normal user interface. IMPORT button is to download files from computer to the pedal. EXPORT button is to upload recorded data from the pedal to the computer. only Supports \* .WAV file format now. See below diagram.



When practicing at home, you can download a sound you like to play as background sound, convenient and practical. You can also upload recorded sound to computer as creative materials

### Specifications

- ◆ Working Current: 165mA
- ◆ Input impedance: 470K  $\Omega$
- ◆ Output impedance: 100 $\Omega$
- ◆ Dimensions: 116(D)\*90(W)\*35(H)mm
- ◆ Weight: 522g(With box)
- ◆ Accessories: 1.Manual 2.USB cable (uploading and downloading with the computer,Please download the software at <http://www.rowinmusic.com/support.php>)
- ◆ Note: Only WAV audio file can be uploaded to the looper from the computer.